

230-49

ELK BUSHKILL → FIR, BIG INDIAN COL → BISCUIT BROOK

Peter & Becky Manning, Julia Goren\*

\* new CCCD staff  
OCT-2007

OCT. 28, 2007

	site	P	Δp	Δe	e <sub>calc</sub>	e <sub>map</sub>	time	R
(A)	Biscuit Brook Trailhead	29.64	—	—	0.899	2090	10:00 AM	
(B)	Elk Bushkill parking area	30.16	0.00	0	—	1580	10:25 AM	↑
(C)	SNY corner??	30.06	0.16	90	1670			$\frac{3180' - 1580'}{30.16 - 29.38} = \frac{1600'}{0.78} = 0.899 = R_1$
(D)	top 1st ledge. Bark rd?	29.78	0.38	342	1922			
(E)	log road	29.69	0.47	423	2003			
(F)	main log road	29.63	0.53	476	2056			
(G)	main rd. descends	29.64	0.52	467	2047			
(H)	log road junc.	29.55	0.61	548	2128		11:25 AM	
(I)	"	29.44	0.72	647	2227			
(J)	"	29.38	0.78	701	2281			
(K)	end rd; old SNY corner	29.23	0.93	836	2416			
(L)	top 50' ledge	29.08	1.08	971	2551			
(M)	\$ campyl	29.02	1.14	1025	2605		12:55 <sup>115 ±</sup> to PM	
(N)	Lunch	28.87	1.29	1160	2740			
(O)	above hemlocks	28.63	1.53	1375	2955			
(P)	1st SURBUS + FIR sapl. mar. 56		1.60	1438	3018			
(Q)	ice damage begins	28.50	1.66	1492	3072			
(R)	P. braunii	28.44	1.72	1546	3126			
(S)	3 photos N	28.40	1.76	1582	3162			
(T)	highest pt. of hike	28.32	1.84	1654	3234		2:23	
(U)	Fir-Big Indian col	28.38	1.78	1600			2:38	
			1.34	1090			2:58	
(V)	1st rill pt	28.52	1.20	976	3066			
(W)	2nd rill pt	28.62	1.10	902	2992			
(X)	3rd rill pt	28.70	1.02	829	2919			
(Y)	confluence of rills	28.82	0.90	732	2822			
(Z)	4th rill pt <b>Stone cairn</b>	28.97	0.75	610	2700		3:48	
(AA)	Fir grave base	29.00	0.72	585	2675			
(BB)	ford	29.37	0.35	285	2375	2350	4:34	
(A)	Biscuit Brook Trailhead	29.72	0.00	0	0	2090	5:50	
(B)	Elk Bushkill p.a.	30.25	—	—	—	1580	±6:15 PM	

SNY 1986

e. path 545

$$\frac{1600'}{0.78} = 0.899 = R_1$$

$R_2 = 0.813$

$$\frac{3180' - 2090'}{29.72 - 28.38} = \frac{1090'}{1.34} = 0.813 = R_2$$

# Forest History & Vegetation Notes

(C) 1670' Possible bank/log road up to SE at about 1630'. Still following SNW blaze up at (C) 1670'.

(D) 1922' Top 1st ledge. Bank road uncertain on contour. Blaze continues up to left; we diverge from it to W. HEM understory from the Elk Bushkill below (C) up to --

(E) 2003' Under taller RM, YB, B, 1 ASK, 1 BASK a few older HEM. Stump ca-35y.

(F) 2056' Main log road heading E-W on steep terrace under hardwoods. Few HEM. OST common to (G). 1960s stumps.

(H) 2128' Widely scat. hemlocks, one up branch log road to E at ± 2160'

(K) 2416' Old SNW corner mark end of log road at beginning of 1<sup>st</sup> at e-p. #545  
SUB 24" to 30".  
Ledges above.

(L) Top 50' ledge HEM to 24" x 50'. BC 30"  
2582'

(M) 2605' \$ Camryl, 1st. HEM scat-brch below above. YB dom 60' x 18"

(N) 2740' 40°F at lunch. HEM, YB, DP, MO

(O) 2955' HEMs out; must end ca. 2800 with some saplings maybe up to 2900' - S. macro.

(P) 3018' 1st SUBST 2 FIRS - all saplings

(Q) 3072' Ice damage begins, mainly on YB, from 4/15-16/07 storm. Continues up onto ridge

at (T) and into col (U), but barely descends from the south side of the col.

(R) 3126' P. braunii. Rachicbrunn. See (W). Compared to green rachis in \$ Int.

(S) 3162' Partial lodar atop ledge. 3 photos looking N down Elk Bushkill & Esopo Valley toward Big Indian.

(T) 3234' YB ice-damaged. B, few BC, VA, \$ both spp, OX.

(U) 3180' col. Very different from 1975 memory (see pp. ) and

incorrect. Nil open, exposed flat ledge. Col not broad at all, but a narrow defile, barely 20 ft. wide. Thickly forested with YB & B. No Conifers SUBs begin only 10' down on south. FIRS visible on west shoulder of Fir Mtn, scattered, forming NO distinct groves.

(V)(W)(X)(Z) pH values range from 4.5 to 4.7. NO unusual high-pH plants seen. Too hurried a hike to examine carefully ledges at (V), but → limestone buccia would have been obvious in them & in till, if present.

(W) P. braunii here and at (R). 2992' & 3126'.

(Z) 2750' Highest ASK; a few more widely scattered below. 2 fir above

(AA) 2675' Lower end of tall fir grove across Biscuit Brook. Maybe 1 or 2 dozen trees up to 60'+ high.

From Eagle-Big Indian Col, drainage

1580' parking area, SNK

Associations Burnham

Hollow

West Branch

Eik Bushkill

gate post

old road 21630' possible SNK corner 1670'

large, multi-story brown bldg. with green roof

4 HEMLOCK groves on spur betw. E & W branches of the Eik Bushkill are visible. There are 4, although a few scarp HEMs occur between the groves

1st noted at (I) which is about same elev. as the 2nd 2227' grove. 1st grove is below.

(L) 2551' to (N) 2740' are about same elev. as 3rd grove.

(O) 2955' is about same elev. as 4th highest grove.

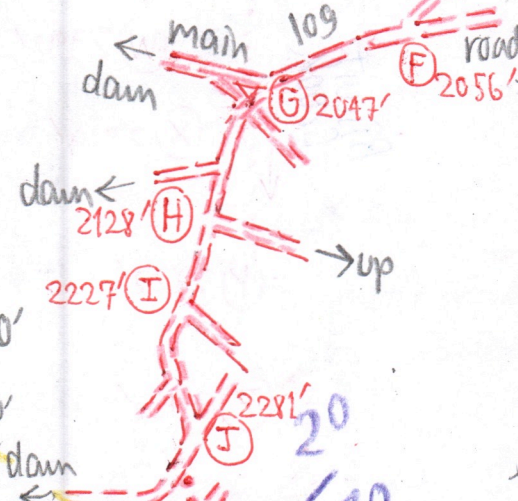
The upper groves could be 10.

Southwest Branch

East Branch

- 1 ± 2227'
- 2 ± 2551'
- 3 ± 2740'
- 4 ± 2955'

Spur betw. east & west branches of the Eik Bushkill has 4 hemlock groves



Log road network ca. 1960s. Stumps, ±30 to 35 y, frequent.

former SNK corner; log roads end ledge 50' e-p # 545

possible 1914 Recknagel survey line??

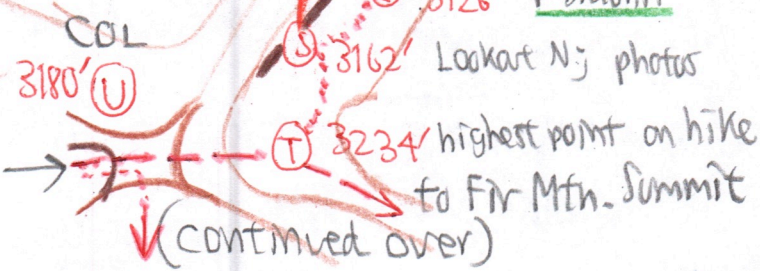
route up

- (M) 2605' Scamp, 1st
- (N) 2740' lunch
- (O) 2955' above hemlocks S. macro
- (P) 3018' 1st FIR & SORBUS sapls.
- (Q) 3072' ice damage begins 4/15/07
- (R) 3126' P. braunii
- (S) 3162' Lookart N; photos

difficult, steep, talus & low ledges, very slow-going

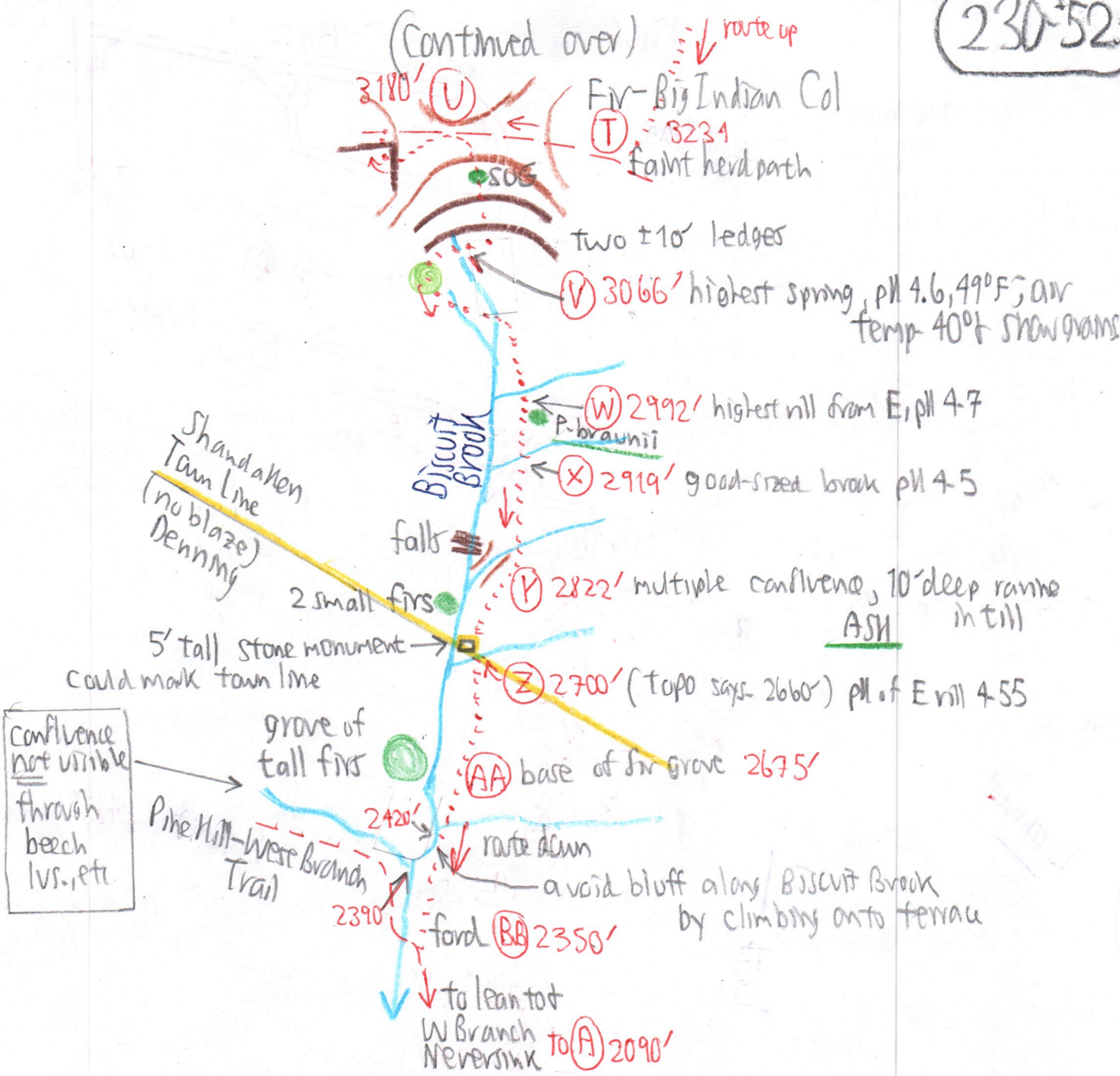
to Big Indian Mtn. Summit

faint herd path/ deer trail



Easier to overshoot the col & climb onto the ridge at (T), then descend.

(Continued over)



Earlier hikes into this area: (See p-250-53)

- 8/19/75 p. 230-1. From Fir Mtn to Big Indian Mtn. NO detail on col.
- 8/19/75 p. 230-13 in #629 soil texture file. A species list included
- 10/11/90 p. 230-3. Ascent of Big Indian Mtn. from the Elk Bushkill
- 6/31/04 p. 231-1: "Neutral" Springs on Biscuit Brook
- 6/13/04 p. 231-3 Ledges above "Neutral" Springs

Low-level fir groves, such as at (AA), could have 2 origins:

1. remnants from a wide-spread, vast postglacial pop'n., or
2. New pop'n. seeded in as a "satellite" grove from pop'ns on the surrounding high ridges. 3. Or both.